

SONEIL

6033 Shawson Dr., Unit 29, Mississauga
Ontario, Canada L5T 1H8, Email: info@soneil.com
Ph.: 905 565 0360 Fax: 905 565 0352



Visit us on the web at <http://www.soneil.com>

PARALLEL & SERIAL APPLICATION OF SONEIL CHARGERS

Soneil chargers can be used in PARALLEL or SERIAL arrangement to provide higher current or charge multiple batteries.

1) **Parallel arrangement:**

Two or more chargers can be connected in parallel to increase current. Connect all +ve together to the +ve of the battery and all -ve together to the -ve of the battery.

Example: For model 2412SRF 24V/ 6A charger – Connecting 2 in parallel will give 24V/ 12A; connecting 3 in parallel will give 24V / 18A; connecting 10 will give 24V / 60A.

Caution: Do not mix different models of chargers.

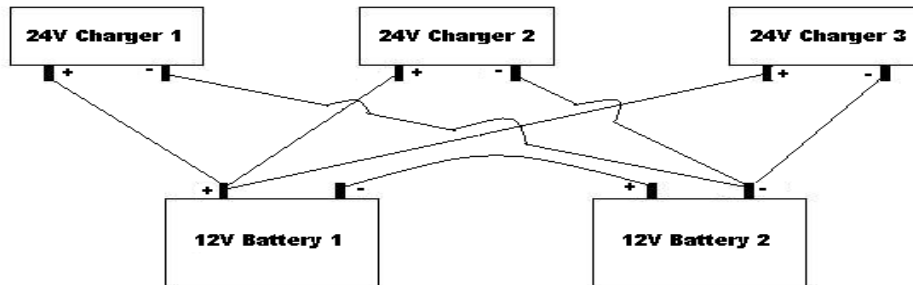


Diagram shows 3 of 24V chargers in parallel charging 24V battery system

2) **Serial arrangement:** Two or more chargers can be connected in series to charge multiple batteries. To charge 72V batteries (6 of 12V batteries in series); you can use 6 of 12V chargers or 3 of 24V chargers or 2 of 36V chargers.

Example: To charge 72V batteries (6 of 12V batteries in series), you can use 3 of 24V chargers. Connect the +ve of the first 24V charger to the +ve of the first 12V battery and the -ve of the first charger to the -ve of the second 12V battery. Now connect +ve of the second 24V charger to the +ve of the third 12V battery and the -ve of the second charger to the -ve of the fourth 12V battery.

And so on

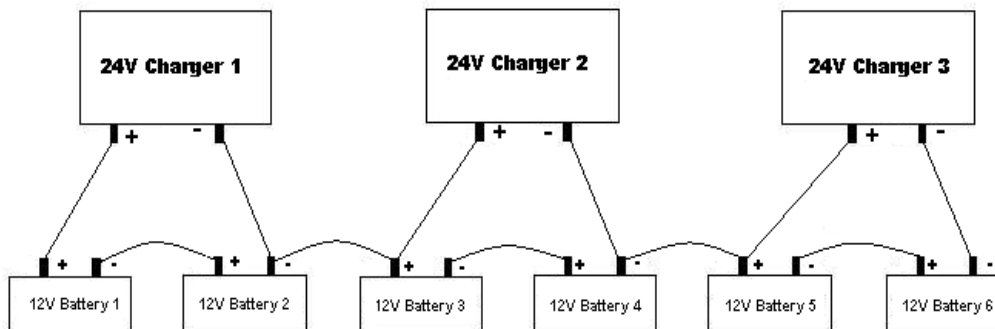


Diagram shows 3 of 24V chargers in Series charging 72V battery system